

Technische Studien

zur Jazzimprovisation

Swing! ♩ = ♩³♩

Bernd Nawrat

Ionisch C



A musical staff in bass clef, 4/4 time signature. It contains a sequence of eighth notes: C2, D2, E2, F2, G2, A2, B2, C3, D3, E3, F3, G3, A3, B3, C4. The notes are grouped into four eighth-note pairs. A whole note chord 'C' is written above the staff.

Dorisch Dm



A musical staff in bass clef, 4/4 time signature. It contains a sequence of eighth notes: D2, E2, F2, G2, A2, B2, C3, D3, E3, F3, G3, A3, B3, C4, D4. The notes are grouped into four eighth-note pairs. A whole note chord 'Dm' is written above the staff.

Phrygisch Em



A musical staff in bass clef, 4/4 time signature. It contains a sequence of eighth notes: E2, F2, G2, A2, B2, C3, D3, E3, F3, G3, A3, B3, C4, D4, E4. The notes are grouped into four eighth-note pairs. A whole note chord 'Em' is written above the staff.

Lydisch F



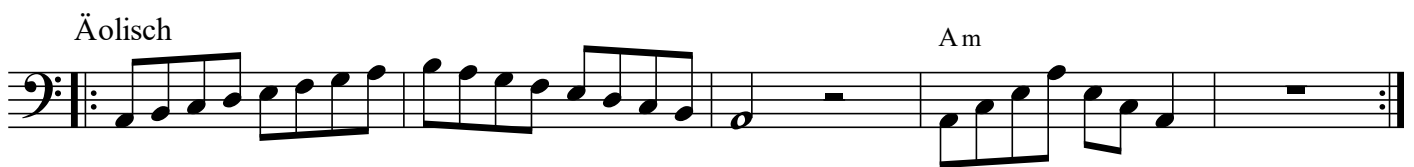
A musical staff in bass clef, 4/4 time signature. It contains a sequence of eighth notes: F2, G2, A2, B2, C3, D3, E3, F3, G3, A3, B3, C4, D4, E4, F4. The notes are grouped into four eighth-note pairs. A whole note chord 'F' is written above the staff.

Mixolydisch G



A musical staff in bass clef, 4/4 time signature. It contains a sequence of eighth notes: G2, A2, B2, C3, D3, E3, F3, G3, A3, B3, C4, D4, E4, F4, G4. The notes are grouped into four eighth-note pairs. A whole note chord 'G' is written above the staff.

Äolisch Am



A musical staff in bass clef, 4/4 time signature. It contains a sequence of eighth notes: A2, B2, C3, D3, E3, F3, G3, A3, B3, C4, D4, E4, F4, G4, A4. The notes are grouped into four eighth-note pairs. A whole note chord 'Am' is written above the staff.

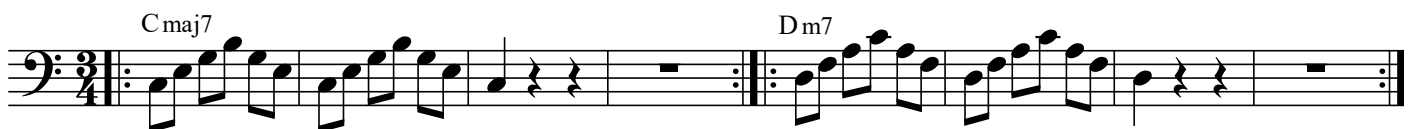
Lokrisch Bm(b5)



A musical staff in bass clef, 4/4 time signature. It contains a sequence of eighth notes: B2, C3, D3, E3, F3, G3, A3, B3, C4, D4, E4, F4, G4, A4, B4. The notes are grouped into four eighth-note pairs. A whole note chord 'Bm(b5)' is written above the staff.

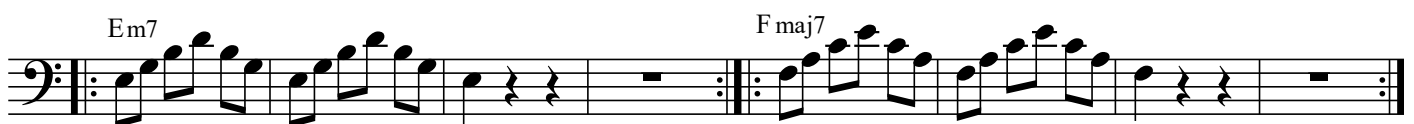
Septakkorde

C maj7 Dm7



A musical staff in bass clef, 3/4 time signature. It contains two measures. The first measure has eighth notes: C2, D2, E2, F2, G2, A2, B2, C3, D3, E3, F3, G3, A3, B3, C4. The second measure has eighth notes: D3, E3, F3, G3, A3, B3, C4, D4, E4, F4, G4, A4, B4, C5, D5. Chords 'C maj7' and 'Dm7' are written above the staff.

Em7 F maj7



A musical staff in bass clef, 3/4 time signature. It contains two measures. The first measure has eighth notes: E2, F2, G2, A2, B2, C3, D3, E3, F3, G3, A3, B3, C4, D4, E4. The second measure has eighth notes: F3, G3, A3, B3, C4, D4, E4, F4, G4, A4, B4, C5, D5, E5, F5. Chords 'Em7' and 'F maj7' are written above the staff.

G7 Am7 Bm7(b5)



A musical staff in bass clef, 3/4 time signature. It contains three measures. The first measure has eighth notes: G2, A2, B2, C3, D3, E3, F3, G3, A3, B3, C4, D4, E4, F4, G4. The second measure has eighth notes: A2, B2, C3, D3, E3, F3, G3, A3, B3, C4, D4, E4, F4, G4, A4. The third measure has eighth notes: B2, C3, D3, E3, F3, G3, A3, B3, C4, D4, E4, F4, G4, A4, B4. Chords 'G7', 'Am7', and 'Bm7(b5)' are written above the staff.

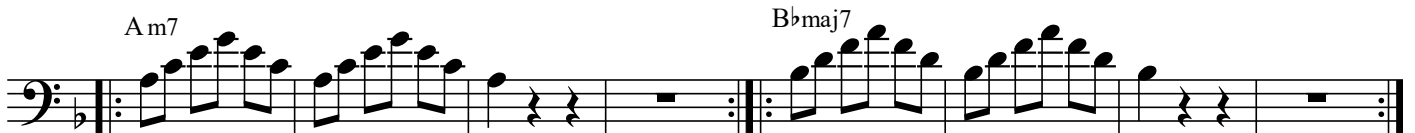
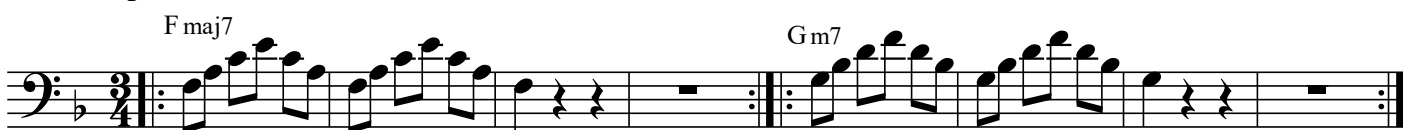
Ausführung der letzten Zeile, wie die Zeilen davor.

Swing! ♩ = ♩³

Bernd Nawrat



Septakkorde



Ausführung der letzten Zeile, wie die Zeilen davor.

Swing! $\text{♩} = \text{♩}^3$

B \flat

C m

D m

E \flat

F

G m

A m ($b5$)

Septakkorde

B \flat maj7

C $m7$

D $m7$

E \flat maj7

F7

G $m7$

A $m7$ ($b5$)

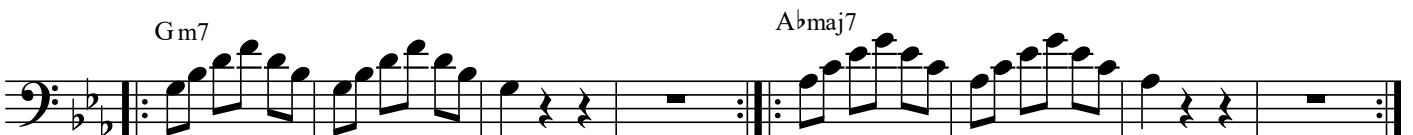
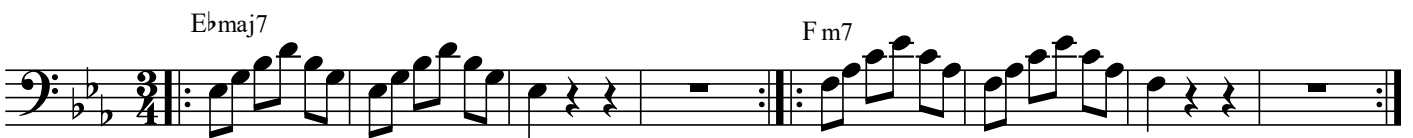
Ausführung der letzten Zeile, wie die Zeilen davor.

Swing! ♩ = ♩³

Bernd Nawrat



Septakkorde



Ausführung der letzten Zeile, wie die Zeilen davor.

Swing! ♩ = ♩³

Bernd Nawrat

Ab

Bbm

Cm

Db

Eb

Fm

Gm(b5)

Septakkorde

Abmaj7

Bbm7

Cm7

Dbmaj7

Eb7

Fm7

Gm7(b5)

Ausführung der letzten Zeile, wie die Zeilen davor.

Swing! ♩ = ♩³

D \flat

Bernd Nawrat

E \flat m

Fm

G \flat

A \flat

B \flat m

Cm(b5)

Septakkorde

D \flat maj7

E \flat m7

Fm7

G \flat maj7

A \flat 7

B \flat m7

Cm7(b5)

Ausführung der letzten Zeile, wie die Zeilen davor.

Swing! $\text{♩} = \text{♩}^3$

Bernd
Nawrat

Seven staves of bass clef musical notation. Each staff contains a sequence of eighth notes, with a triplet of eighth notes indicated by a '3' over a bracket. The key signature has three flats (B-flat, E-flat, A-flat). The time signature is 4/4. Chord symbols are placed above the staves: Gb, Abm, Bbm, B, Db, Ebm, and Fm(b5).

Septakkorde

Three staves of bass clef musical notation. Each staff contains a sequence of eighth notes, with a triplet of eighth notes indicated by a '3' over a bracket. The key signature has three flats (B-flat, E-flat, A-flat). The time signature is 3/4. Chord symbols are placed above the staves: Gbmaj7, Abm7, Bbm7, Bmaj7, Db7, Ebm7, and Fm7(b5).

Ausführung der letzten Zeile, wie die Zeilen davor.

Swing! ♩ = ♩³

G

Am

Bm

C

D

Em

F#m(b5)

Septakkorde

Gmaj7 Am7

Bm7 Cmaj7

D7 Em7 F#m7(b5)

Ausführung der letzten Zeile, wie die Zeilen davor.

Swing! ♩ = ♩³

Bernd Nawrat

D

Em

F#m

G

A

Bm

C#m(b5)

Septakkorde

Dmaj7 Em7

F#m7 Gmaj7

A7 Bm7 C#m7(b5)

Ausführung der letzten Zeile, wie die Zeilen davor.

Swing! ♩ = ♩³

Bernd Nawrat

A

Bm

C#m

D

E

F#m

G#m(b5)

Septakkorde

A maj7 Bm7

C#m7 D maj7

E7 F#m7 G#m7(b5)

Ausführung der letzten Zeile, wie die Zeilen

Swing! ♩ = ♩³

Bernd Nawrat

E

F#m

G#m

A

B

C#m

D#m(b5)

Septakkorde

E maj7 F#m7

G#m7 A maj7

B7 C#m7 D#m7(b5)

Ausführung der letzten Zeile, wie die Zeilen davor.

Swing! ♩ = ♩³

B

A single staff of music in bass clef, key of B major (two sharps), 4/4 time. It contains a rhythmic exercise for the chord B. The exercise consists of a sequence of eighth notes: B2, C#3, D#3, E4, F#4, G#4, A4, B4, followed by a quarter rest, then another sequence: B4, A4, G#4, F#4, E4, D#3, C#3, B2, followed by a quarter rest. The staff ends with a double bar line and repeat dots.

C#m

A single staff of music in bass clef, key of B major (two sharps), 4/4 time. It contains a rhythmic exercise for the chord C#m. The exercise consists of a sequence of eighth notes: C#3, D#3, E4, F#4, G#4, A4, B4, followed by a quarter rest, then another sequence: B4, A4, G#4, F#4, E4, D#3, C#3, followed by a quarter rest. The staff ends with a double bar line and repeat dots.

D#m

A single staff of music in bass clef, key of B major (two sharps), 4/4 time. It contains a rhythmic exercise for the chord D#m. The exercise consists of a sequence of eighth notes: D#3, E4, F#4, G#4, A4, B4, followed by a quarter rest, then another sequence: B4, A4, G#4, F#4, E4, D#3, followed by a quarter rest. The staff ends with a double bar line and repeat dots.

E

A single staff of music in bass clef, key of B major (two sharps), 4/4 time. It contains a rhythmic exercise for the chord E. The exercise consists of a sequence of eighth notes: E4, F#4, G#4, A4, B4, followed by a quarter rest, then another sequence: B4, A4, G#4, F#4, E4, followed by a quarter rest. The staff ends with a double bar line and repeat dots.

F#

A single staff of music in bass clef, key of B major (two sharps), 4/4 time. It contains a rhythmic exercise for the chord F#. The exercise consists of a sequence of eighth notes: F#4, G#4, A4, B4, followed by a quarter rest, then another sequence: B4, A4, G#4, F#4, followed by a quarter rest. The staff ends with a double bar line and repeat dots.

G#m

A single staff of music in bass clef, key of B major (two sharps), 4/4 time. It contains a rhythmic exercise for the chord G#m. The exercise consists of a sequence of eighth notes: G#4, A4, B4, followed by a quarter rest, then another sequence: B4, A4, G#4, followed by a quarter rest. The staff ends with a double bar line and repeat dots.

A#m(b5)

A single staff of music in bass clef, key of B major (two sharps), 4/4 time. It contains a rhythmic exercise for the chord A#m(b5). The exercise consists of a sequence of eighth notes: A#4, B4, followed by a quarter rest, then another sequence: B4, A#4, followed by a quarter rest. The staff ends with a double bar line and repeat dots.

Septakkorde

B maj7 C#m7

A single staff of music in bass clef, key of B major (two sharps), 3/4 time. It contains a rhythmic exercise for the chords B maj7 and C#m7. The exercise consists of a sequence of eighth notes: B2, C#3, D#3, E4, followed by a quarter rest, then another sequence: B4, A4, G#4, F#4, E4, D#3, C#3, B2, followed by a quarter rest. The staff ends with a double bar line and repeat dots.

D#m7 E maj7

A single staff of music in bass clef, key of B major (two sharps), 3/4 time. It contains a rhythmic exercise for the chords D#m7 and E maj7. The exercise consists of a sequence of eighth notes: D#3, E4, F#4, G#4, A4, B4, followed by a quarter rest, then another sequence: B4, A4, G#4, F#4, E4, D#3, C#3, B2, followed by a quarter rest. The staff ends with a double bar line and repeat dots.

F#7 G#m7 A#m7(b5)

A single staff of music in bass clef, key of B major (two sharps), 3/4 time. It contains a rhythmic exercise for the chords F#7, G#m7, and A#m7(b5). The exercise consists of a sequence of eighth notes: F#4, G#4, A4, B4, followed by a quarter rest, then another sequence: B4, A4, G#4, F#4, followed by a quarter rest, then another sequence: B4, A#4, followed by a quarter rest. The staff ends with a double bar line and repeat dots.

Ausführung der letzten Zeile, wie die Zeilen davor.

Übungsvarianten für die Tonleiterübungen

Variation A

Bernd Nawrat

Two staves of musical notation in 4/4 time. The first staff contains a sequence of eighth notes: C2, D2, E2, F2, G2, A2, B2, C3, D3, E3, F3, G3, A3, B3, C4. The second staff contains a sequence of eighth notes: C3, D3, E3, F3, G3, A3, B3, C4, D4, E4, F4, G4, A4, B4, C5.

F-Dur

Musical notation for F-Dur in 4/4 time. It shows a sequence of eighth notes: F2, G2, A2, Bb2, C3, D3, E3, F3, G3, A3, Bb3, C4. This is followed by six bars of rests, each marked with a slash and a percent sign (%).

Bb-Dur

Musical notation for Bb-Dur in 4/4 time. It shows a sequence of eighth notes: Bb2, C3, D3, Eb3, F3, G3, Ab3, Bb3, C4, D4, Eb4, F4, G4, Ab4, Bb4. This is followed by six bars of rests, each marked with a slash and a percent sign (%).

Eb-Dur

Musical notation for Eb-Dur in 4/4 time. It shows a sequence of eighth notes: Eb2, F2, G2, Ab2, Bb2, C3, D3, Eb3, F3, G3, Ab3, Bb3, C4, D4, Eb4, F4. This is followed by six bars of rests, each marked with a slash and a percent sign (%).

Ab-Dur

Musical notation for Ab-Dur in 4/4 time. It shows a sequence of eighth notes: Ab2, Bb2, C3, D3, Eb3, F3, G3, Ab3, Bb3, C4, D4, Eb4, F4, G4, Ab4, Bb4. This is followed by six bars of rests, each marked with a slash and a percent sign (%).

Db-Dur

Musical notation for Db-Dur in 4/4 time. It shows a sequence of eighth notes: Db2, Eb2, F2, G2, Ab2, Bb2, C3, Db3, Eb3, F3, G3, Ab3, Bb3, C4, Db4, Eb4. This is followed by six bars of rests, each marked with a slash and a percent sign (%).

Gb-Dur

Musical notation for Gb-Dur in 4/4 time. It shows a sequence of eighth notes: Gb2, Ab2, Bb2, C3, Db3, Eb3, F3, Gb3, Ab3, Bb3, C4, Db4, Eb4, F4, Gb4, Ab4. This is followed by six bars of rests, each marked with a slash and a percent sign (%).

G-Dur

Musical notation for G-Dur in 4/4 time. It shows a sequence of eighth notes: G2, A2, B2, C3, D3, E3, F3, G3, A3, B3, C4, D4, E4, F4, G4, A4. This is followed by six bars of rests, each marked with a slash and a percent sign (%).

D-Dur

Musical notation for D-Dur in 4/4 time. It shows a sequence of eighth notes: D2, E2, F2, G2, A2, B2, C3, D3, E3, F3, G3, A3, B3, C4, D4, E4, F4, G4, A4, B4, C5. This is followed by six bars of rests, each marked with a slash and a percent sign (%).

A-Dur

E-Dur

B-Dur

Variation B

F-Dur

Bb-Dur

Eb-Dur

Ab-Dur

Db-Dur

Gb-Dur

G-Dur

D-Dur

A-Dur

E-Dur

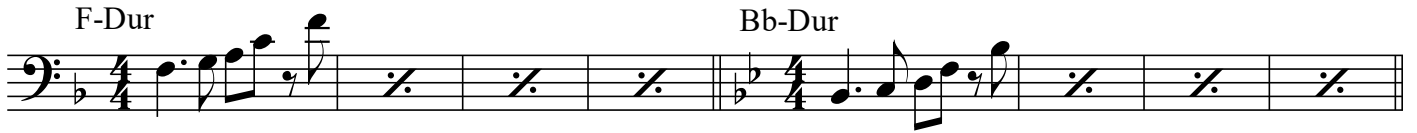
B-Dur

Variation C

Bernd Nawrat



F-Dur



Bb-Dur

Eb-Dur



Ab-Dur

Db-Dur



Gb-Dur



Variation D



F-Dur



Bernd Nawrat

Bb-Dur

4/4

Eb-Dur

4/4

Ab-Dur

4/4

Db-Dur

4/4

Gb-Dur

4/4

G-Dur

4/4

D-Dur

4/4

A-Dur

4/4

E-Dur

4/4

B-Dur

4/4

Akkord-Variationen

Stufendreiklänge der jeweiligen Dur-Tonleiter

Bernd Nawrat

C Dm Em

Three measures of bass clef notation in 4/4 time. The first measure is for C major, the second for D minor, and the third for E minor. Each measure contains a triplet of eighth notes followed by a quarter note, with a fermata over the quarter note.

F G Am

Three measures of bass clef notation in 4/4 time. The first measure is for F major, the second for G major, and the third for A minor. Each measure contains a triplet of eighth notes followed by a quarter note, with a fermata over the quarter note.

Bm(b5)

One measure of bass clef notation in 4/4 time for Bm(b5) chord. It contains a triplet of eighth notes followed by a quarter note, with a fermata over the quarter note.

F Gm Am

Three measures of bass clef notation in 4/4 time with one flat. The first measure is for F major, the second for G minor, and the third for A minor. Each measure contains a triplet of eighth notes followed by a quarter note, with a fermata over the quarter note.

Bb C Dm

Three measures of bass clef notation in 4/4 time with one flat. The first measure is for Bb major, the second for C major, and the third for D minor. Each measure contains a triplet of eighth notes followed by a quarter note, with a fermata over the quarter note.

Em(b5)

One measure of bass clef notation in 4/4 time with one flat for Em(b5) chord. It contains a triplet of eighth notes followed by a quarter note, with a fermata over the quarter note.

Bb Cm Dm

Three measures of bass clef notation in 4/4 time with one flat. The first measure is for Bb major, the second for C minor, and the third for D minor. Each measure contains a triplet of eighth notes followed by a quarter note, with a fermata over the quarter note.

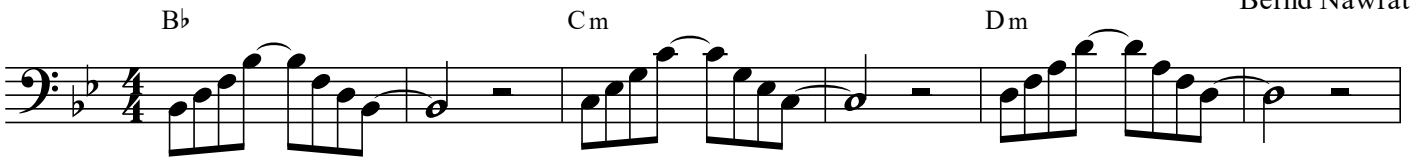
Eb F Gm

Three measures of bass clef notation in 4/4 time with one flat. The first measure is for Eb major, the second for F major, and the third for G minor. Each measure contains a triplet of eighth notes followed by a quarter note, with a fermata over the quarter note.

Am(b5)

One measure of bass clef notation in 4/4 time with one flat for Am(b5) chord. It contains a triplet of eighth notes followed by a quarter note, with a fermata over the quarter note.

B \flat Cm Dm



E \flat F Gm



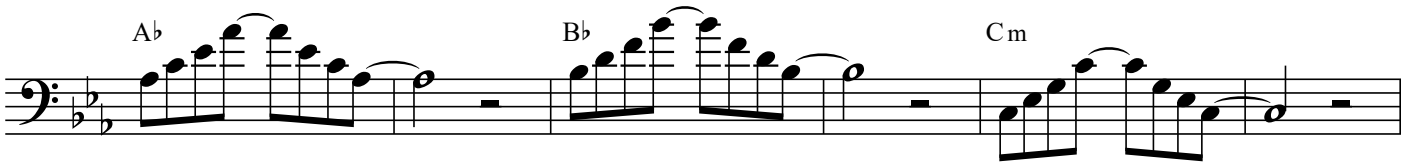
A m (b5)



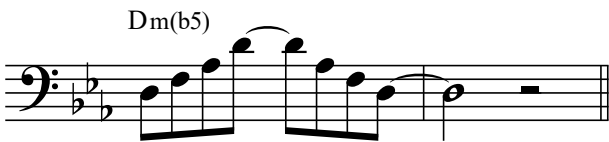
E \flat F m G m



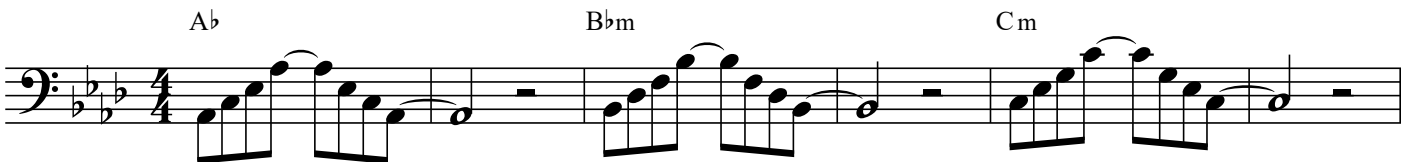
A \flat B \flat Cm



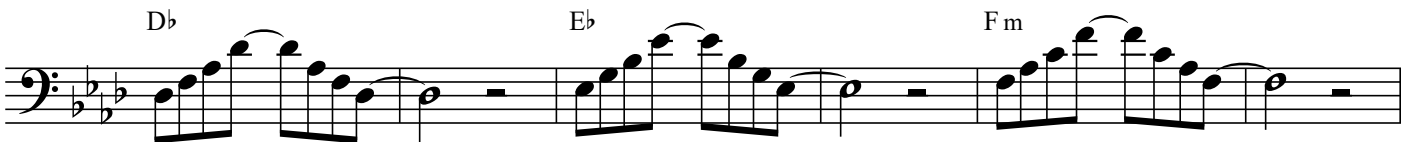
D m (b5)



A \flat B \flat m Cm



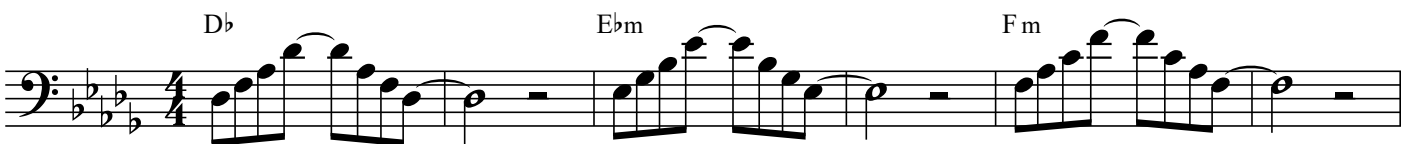
D \flat E \flat F m



G m (b5)



D \flat E \flat m F m



Bernd Nawrat

Chord progression: G \flat , A \flat , B \flat m

Chord: Cm(b5)

Chord progression: G \flat , A \flat m, B \flat m

Chord progression: B, D \flat , E \flat m

Chord: Fm(b5)

Chord progression: G, A m, B m

Chord progression: C, D, E m

Chord: F#m(b5)

Chord progression: D, E m, F#m

Chord progression: G, A, B m

Chord: C#m(b5)

A Bm C#m

D E F#m

G#m(b5)

E F#m G#m

A B C#m

D#m(b5)

B C#m D#m

E F# G#m

A#m(b5)

Stufenseptakkorde der jeweiligen Dur-Tonleiter

Bernd Nawrat

C maj7 D m7 E m7

Three measures of bass clef music in 4/4 time. Measure 1: C major scale, C maj7 chord. Measure 2: D minor scale, D m7 chord. Measure 3: E minor scale, E m7 chord.

F maj7 G7 A m7

Three measures of bass clef music in 4/4 time. Measure 4: F major scale, F maj7 chord. Measure 5: G major scale, G7 chord. Measure 6: A minor scale, A m7 chord.

B m7(b5)

Measure 7: B minor scale, B m7(b5) chord.

F maj7 G m7 A m7

Three measures of bass clef music in 4/4 time. Measure 8: F major scale, F maj7 chord. Measure 9: G minor scale, G m7 chord. Measure 10: A minor scale, A m7 chord.

B♭maj7 C7 D m7

Three measures of bass clef music in 4/4 time. Measure 11: Bb major scale, Bb maj7 chord. Measure 12: C major scale, C7 chord. Measure 13: D minor scale, D m7 chord.

E m7(b5)

Measure 14: E minor scale, E m7(b5) chord.

B♭maj7 C m7 D m7

Three measures of bass clef music in 4/4 time. Measure 15: Bb major scale, Bb maj7 chord. Measure 16: C minor scale, C m7 chord. Measure 17: D minor scale, D m7 chord.

E♭maj7 F7 G m7

Three measures of bass clef music in 4/4 time. Measure 18: Eb major scale, Eb maj7 chord. Measure 19: F major scale, F7 chord. Measure 20: G minor scale, G m7 chord.

A m7(b5)

Measure 21: A minor scale, A m7(b5) chord.

E♭maj7 F m7 G m7

Three measures of bass clef music in 4/4 time. Measure 22: Eb major scale, Eb maj7 chord. Measure 23: F minor scale, F m7 chord. Measure 24: G minor scale, G m7 chord.

A♭maj7 B♭7 Cm7

Dm7(b5)

A♭maj7 B♭m7 Cm7

D♭maj7 E♭7 Fm7

Gm7(b5)

D♭maj7 E♭m7 Fm7

G♭maj7 A♭7 B♭m7

Cm7(b5)

G♭maj7 A♭m7 B♭m7

Bmaj7 D♭7 E♭m7

Fm7(b5)

Gmaj7 Am7 Bm7

Cmaj7 D7 Em7

F#m7(b5)

Dmaj7 Em7 F#m7

Gmaj7 A7 Bm7

C#m7(b5)

Amaj7 Bm7 C#m7

Dmaj7 E7 F#m7

G#m7(b5)

Bmaj7 C#m7 D#m7

Emaj7 F#7 G#m7 A#m7(b5)

Kleine Melodien in dorisch und äolisch Moll

F-Moll dorisch

Bernd Nawrat

Two staves of musical notation in bass clef, F minor, common time. The melody consists of eighth and quarter notes, ending with a double bar line.

Scarborough Fair

G-Moll dorisch

Englisches Volkslied

Two staves of musical notation in bass clef, G minor, 3/4 time. The melody consists of quarter and eighth notes, ending with a double bar line.

So treiben wir den Winter aus

D-Moll dorisch

Volkslied aus dem 16. Jhd.

Two staves of musical notation in bass clef, D minor, 3/4 time. The melody consists of quarter and eighth notes, ending with a double bar line.

Ach bitterer Winter

E-Moll äolisch

Volkslied aus dem 17. Jhd.

Two staves of musical notation in bass clef, E minor, 3/4 time. The melody consists of quarter and eighth notes, ending with a double bar line.

Es kommt ein Schiff

äolisch Moll

Volkslied

Two staves of music in bass clef, 3/4 time signature, and one flat (B-flat). The first staff contains the first line of music, and the second staff contains the second line. The melody is written in a simple, folk-like style with a mix of quarter and eighth notes, and some slurs.

O Heiland, reiß die Himmel auf

dorisch Moll

Volkslied aus dem 17. Jhd.

Two staves of music in bass clef, 6/4 time signature, and two sharps (F# and C#). The first staff contains the first line of music, and the second staff contains the second line. The melody is written in a simple, folk-like style with a mix of quarter and eighth notes, and some slurs.

Wenn ich des Morgens früh aufsteh

äolisch Moll

Volkslied aus dem 16. Jhd.

Three staves of music in bass clef, 3/4 time signature, and one flat (B-flat). The first staff contains the first line of music, the second staff contains the second line, and the third staff contains the third line. The melody is written in a simple, folk-like style with a mix of quarter and eighth notes, and some slurs.